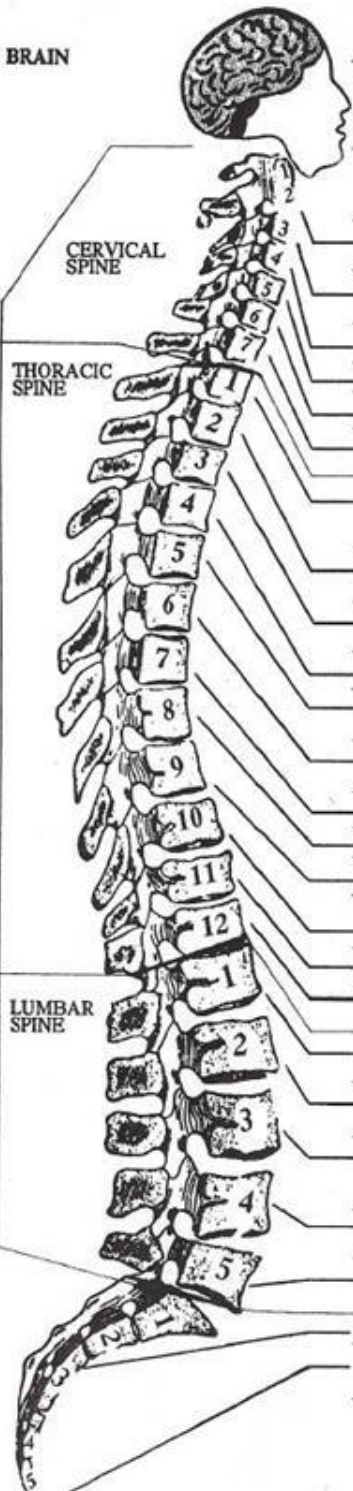


EXPLANATION: Every part of the body is controlled by nerves, and every one of these nerves connects directly or indirectly with the spine. This chart was compiled from over a dozen standard medical text and reference books and shows in column:-  
 A: The names of the vertebrae and nerves in the spine.  
 B: The areas known to receive nerve fibers from these nerves.  
 C: Conditions that follow a pressure on, or interference with these nerves.

**BRAIN**



A	B	C
1C	Blood supply to the head, the pituitary gland, the scalp, bones of the face, the brain itself, inner and middle ear, the sympathetic nerve system, all descending and ascending tracts and fibers.	Headaches, nervousness, insomnia, head colds, high blood pressure, migraine headaches, chronic tiredness, dizziness or vertigo, or any of the below problems.
2C	Eyes, optic nerve, auditory nerve, sinuses, mastoid bones, tongue, forehead.	Sinus trouble, allergies.
3C	Cheeks, outer ear, face bones, teeth, trifacial nerve.	Neuralgia, neuritis.
4C	Nose, lips, mouth, eustachian tube.	Hay fever, hard of hearing.
5C	Vocal cords, neck glands, pharynx.	Laryngitis, hoarseness, throat conditions like a sore throat.
6C	Neck muscles, shoulders, tonsils.	Stiff neck, pain in upper arm, tonsillitis.
7C	Thyroid gland, bursa in the shoulders, the elbows.	Bursitis, colds, thyroid conditions.
1T	Arms from the elbows down, including the hands, wrists and fingers, also the esophagus and trachea.	Asthma, cough, difficult breathing, shortness of breath, pain in lower arm and hands.
2T	Heart including its valves, and covering, also coronary arteries.	Functional heart conditions and certain chest pains.
3T	Lungs, bronchial tubes, pleura, chest, breast, nipples.	Bronchitis, pneumonia, congestion.
4T	Gall bladder and common duct.	Gall bladder conditions, jaundice, shingles.
5T	Liver, solar plexus, blood.	Liver conditions, fevers, low blood pressure, poor circulation.
6T	Stomach.	Stomach troubles including nervous stomach, indigestion, heart burn.
7T	Pancreas, islands of Langerhans, duodenum.	Ulcers, gastritis.
8T	Spleen, diaphragm.	Lowered resistance.
9T	Adrenals or supra-renals	Allergies, hives.
10T	Kidneys	Kidney troubles, hardening of the arteries, chronic tiredness, nephritis, pyelitis.
11T	Kidneys, Ureters.	Skin conditions like acne, exzema, boils, ecz.
12T	Small intestines, Fallopian tubes, lymph circulation.	Rheumatism, gas pains, certain types of sterility.
1L	Large intestines or colon, inguinal rings.	Constipation, colitis, dysentery, diarrhea, ruptures or hernias.
2L	Appendix, abdomen, upper leg, caecum.	Appendicitis, cramps, difficult breathing, acidosis, varicose veins.
3L	Sex organs, ovaries or testicles, uterus, bladder, knee.	Bladder troubles, menstrual troubles like painful or irregular periods, miscarriages, bed wetting, impotency, change of life symptoms, many knee pains.
4L	Prostate gland, muscles of the lower back, sciatic nerve.	Sciatica, lumbago, difficult, painful or frequent urination, backaches.
5L	Lower legs, ankles, feet, toes, arches.	Poor circulation in the legs, swollen ankles, weak ankles and arches, cold feet, weakness in the legs, leg cramps.
SACRUM	Hip bones, buttocks.	Sacro-iliac condition, spinal curvatures.
COCCYX	Rectum, anus.	Hemorrhoids or piles, pruritus or itching, pain at end of spine on sitting.